

SCPCF-1064-5

Solid Core Photonic Crystal Fiber for IR supercontinuum generation

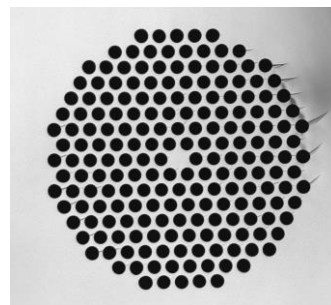


We tailor our hollow-core fibers to your needs

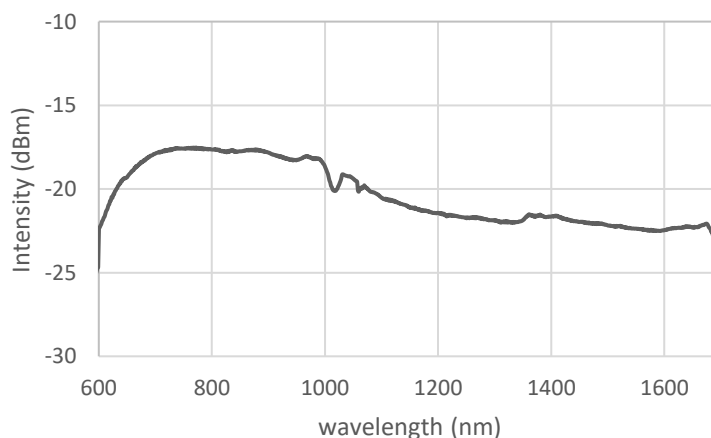
- Ideal for IR supercontinuum generation
- High non linear coefficient

Physical Properties

core diameter	$5 \pm 0,5 \mu\text{m}$
Outer fiber diameter	$125 \pm 5 \mu\text{m}$
Coating Diameter	$270 \pm 5 \mu\text{m}$
Fiber coating layer	double coating



SCPCF-1064-5 cross-section



supercontinuum generation with a 5m long SCPCF-1064-5 @1064nm

All specifications may be changed without notice